

# Ephesians

The Christian  
Marriage!



# What Is It About?

The believer's wealth is described to help believers live in accordance with it.



# Ephesians 1 (wealth)

- Riches (1)



- ◆ Riches described (1:1-14)

- ◆ Prayer for comprehension (1:15-23)

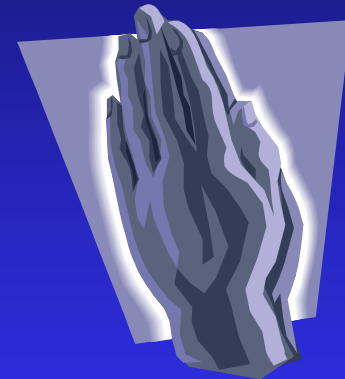
# Ephesians 2–3 (wealth)

- Position (2–3)

- ◆ Individual (2:1-10)

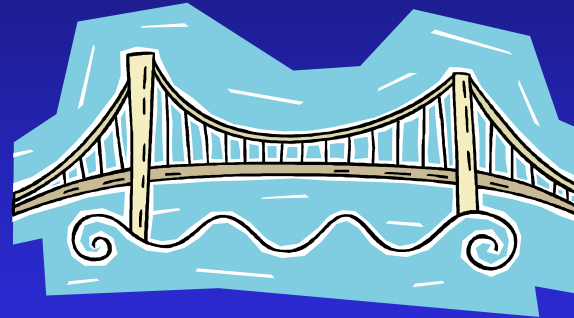
- ◆ Corporate (2:11–3:13)

- ◆ Prayer for comprehension (3:14-21)



# What Is Inside?

1-3



4-6

ORTHODOXY

ORTHOPRAXY

# What Is Inside?

**1–3**

---

Relationship

**4–6**

---

Responsibility

# What Is Inside?

**1–3**

---

Relationship

No imperatives

**4–6**

---

Responsibility

35 imperatives

# What Is Inside?

**1–3**

---

Relationship

No imperatives

Orthodoxy

**4–6**

---

Responsibility

35 imperatives

Orthopraxy



# What Is Inside?

**1–3**

---

Relationship

No imperatives

Orthodoxy

Knowledge

**4–6**

---

Responsibility

35 imperatives

Orthopraxy

Wisdom

# What Is Inside?

**1–3**

---

Relationship

No imperatives

Orthodoxy

Knowledge

Belief

**4–6**

---

Responsibility

35 imperatives

Orthopraxy

Wisdom

Behavior

# What Is Inside?

1–3

---

Relationship

No imperatives

Orthodoxy

Knowledge

Belief

Position

4–6

---

Responsibility

35 imperatives

Orthopraxy

Wisdom

Behavior

Practice

# What Is Inside?

1–3

---

Relationship

No imperatives

Orthodoxy

Knowledge

Belief

Position

Privileges

4–6

---

Responsibility

35 imperatives

Orthopraxy

Wisdom

Behavior

Practice

Responsibility

# Position and Practice



- Positional unity
  - ◆ Eph 2:11–3:13
- Practical unity
  - ◆ Eph 4:1-16

# Position and Practice

- Positional holiness
  - ◆ Eph 1:4
- Practical holiness
  - ◆ Eph 4:17-32



# Ephesians 5:1-17

- Walk of love (1-6)
- Walk of light (7-14)
- Walk of wisdom (15-17)



# Ephesians 5:18-21

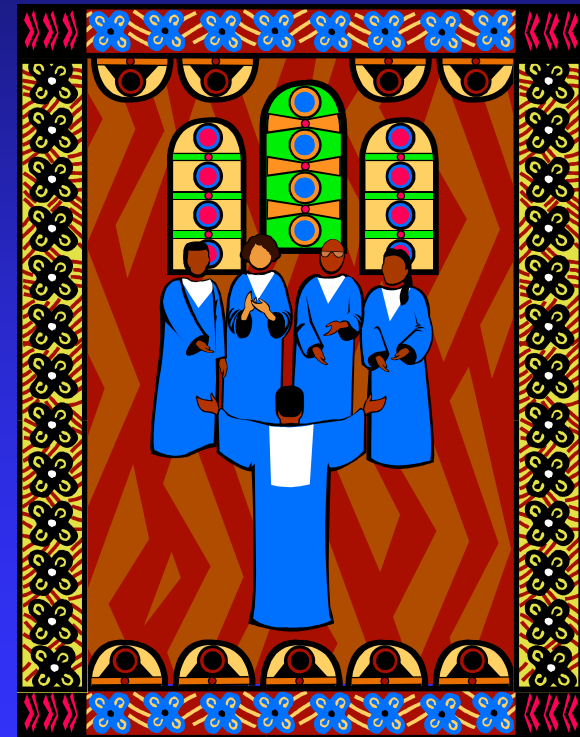
- Negative command (18a)
- Positive command (18b)
- Consequences (19-21)





# Consequences of Spirit Control (19-21)

- Public worship (19a)
- Private worship (19b)
- Thanksgiving (20)
- Submission (21)



# Submission (5:21-6:9)

- Submission (5:21)
- Marriage (5:22-33)
- Parent-child (6:1-4)
- Slave-master (6:5-9)



# Ephesians 5:22-33

- Wife's role (22-24)
- Husband's role (25-33)



# Divine Judgments (3:14-19)

- Serpent (3:14-15)
- Woman (3:16)
- Man (3:17-19)



# Woman (3:16)

- Painful child birth (3:16a)
- Relational conflict (3:16b)

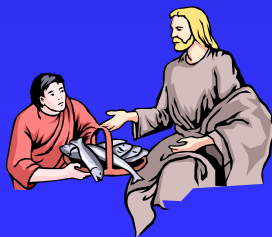


# Matthew 19:3-6

- Genesis 1:27
- Genesis 2:24



# "SEVEN SIGNS" in Gospel of John



**Changing Water into Wine**

**2:11**

**Healing official's son**

**4:46-54**

**Healing an invalid at the Pool of Bethesda**

**5:1-18**

**Feeding the 5,000**

**6:5-14**

**Walking on water**

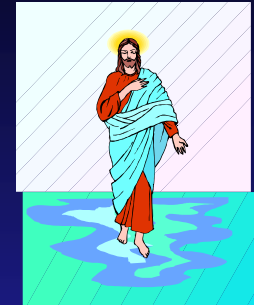
**6:16-21**

**Healing a blind man**

**9:1-7**

**Raising dead Lazarus**

**11:1-45**

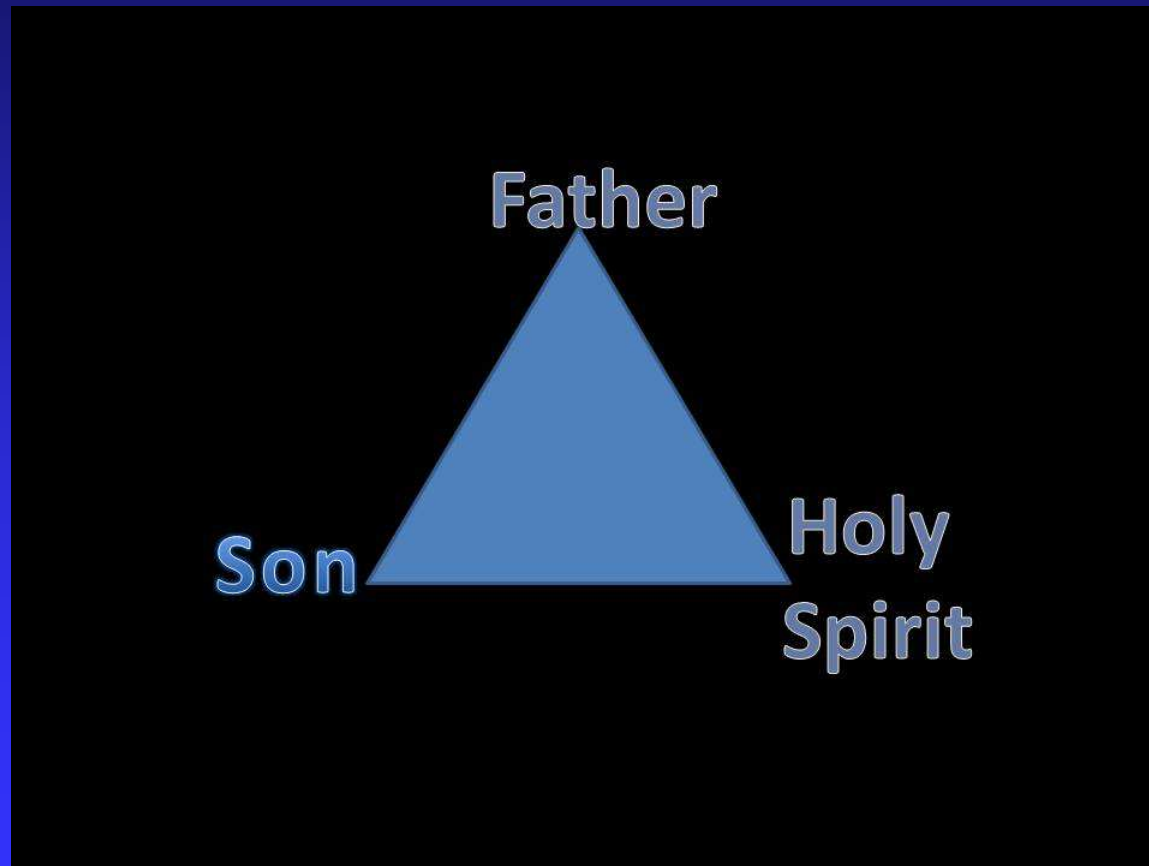


# Submission 5:22

- Christ's submission to His parents (Lk 2:51)
- Christ's submission to Father (1Cor 15:28)
- Demons' submission to disciples (Lk10:17)
- Angels' submission to Christ (1 Pet 3:20)
- Citizens' submission to state (Titus 3:1)



# Trinity



# Both Men and Women Are:

- Special creations of God (Gen 1:27)
- Image bearers of God (Gen 1:27)
- Co-rulers (Gen 1:26-28)
- Joint heirs of salvation (1 Pet 3:7)

# Eph 5:25-33 Outline

- Command (25a)
- Illustration #1 (25b-27)
- Illustration #2 (28-29a, 31)
- Illustration #3 (29b-30, 32)
- Conclusion (33)

# Command (5:25a)

- Not a suggestion
- *Agape*
- Love illustrated



# Illustration # 1 (5:25b-27)

- Christ's love for His bride the church

- Christ's selfless love for His church



## Illustration # 2 (5:28-29a, 31)

- A man's relationship to his own body
- The biblical assumption of self-love (Lev 19:18)
- The husband and the wife are one body (Gen 2:24)

## Illustration # 3 (5:29b-30, 33)

- Christ's relationship to His body the church
- What Christ does for His body the husband should do for His wife

# Conclusion (5:33)

- Husband's role (33a)
- Wife's role (33b)
  - ◆ Submission (22-24)
  - ◆ Respect (33b)





# Eph 5:25-33 Outline

- Command (25a)
- Illustration #1 (25b-27)
- Illustration #2 (28-29a, 31)
- Illustration #3 (29b-30, 32)
- Conclusion (33)