

Ephesians

The Walk of
Love, Light, and
Wisdom!



What Is It About?

The believer's wealth is described to help believers live in accordance with it.



Ephesians 1 (wealth)

- Riches (1)



- ◆ Riches described (1:1-14)

- ◆ Prayer for comprehension (1:15-23)

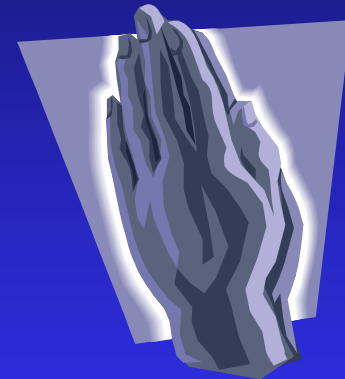
Ephesians 2–3 (wealth)

- Position (2–3)

- ◆ Individual (2:1-10)

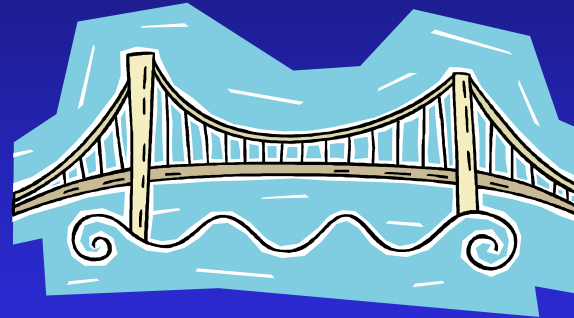
- ◆ Corporate (2:11–3:13)

- ◆ Prayer for comprehension (3:14-21)



What Is Inside?

1-3



4-6

ORTHODOXY

ORTHOPRAXY

What Is Inside?

1–3

Relationship

4–6

Responsibility

What Is Inside?

1–3

Relationship

No imperatives

4–6

Responsibility

35 imperatives

What Is Inside?

1–3

Relationship

No imperatives

Orthodoxy

4–6

Responsibility

35 imperatives

Orthopraxy

What Is Inside?

1–3

Relationship

No imperatives

Orthodoxy

Knowledge

4–6

Responsibility

35 imperatives

Orthopraxy

Wisdom

What Is Inside?

1–3

Relationship

No imperatives

Orthodoxy

Knowledge

Belief

4–6

Responsibility

35 imperatives

Orthopraxy

Wisdom

Behavior

What Is Inside?

1–3

Relationship

No imperatives

Orthodoxy

Knowledge

Belief

Position

4–6

Responsibility

35 imperatives

Orthopraxy

Wisdom

Behavior

Practice

What Is Inside?

1–3

Relationship

No imperatives

Orthodoxy

Knowledge

Belief

Position

Privileges

4–6

Responsibility

35 imperatives

Orthopraxy

Wisdom

Behavior

Practice

Responsibility

Position and Practice



- Positional unity
 - ◆ Eph 2:11–3:13
- Practical unity
 - ◆ Eph 4:1-16

Position and Practice

- Positional holiness
 - ◆ Eph 1:4
- Practical holiness
 - ◆ Eph 4:17-32

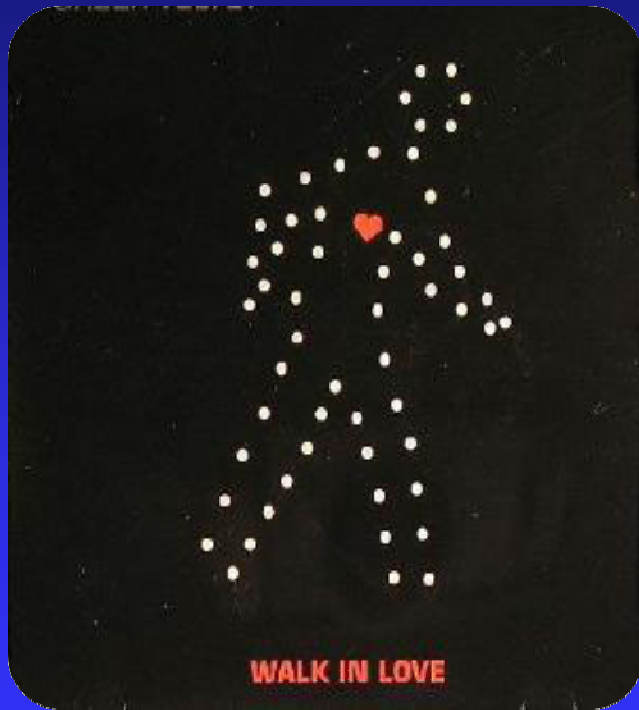


Ephesians 5:1-17

- Walk of love (1-6)
- Walk of light (7-14)
- Walk of wisdom (15-17)



Walk of Love (1-6)



- Positive command (1-2)
- Negative command (3-6)

Positive Command (1-2)

- Imitate God (1)
- Walk in love (2)
 - ◆ Command (2a)
 - ◆ Example of Christ (2b)

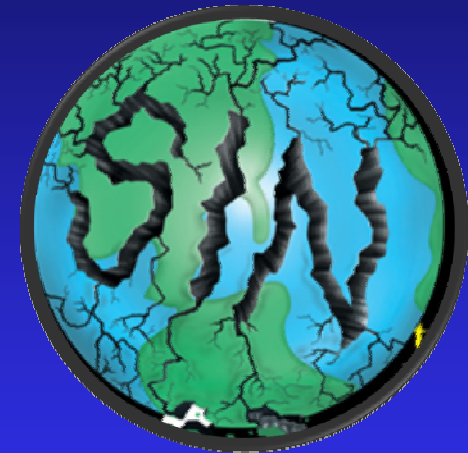


Negative Command (3-6)

- Responsibility (3-4)

- ◆ Conduct (3)

- ◆ Conversation (4)



- Reason (5-6)-evil doers:

- ◆ Have no inheritance (5)

- ◆ Will experience divine wrath (6)

Walk of Light (7-14)



- Do not become involved with evil doers (7-10)
- Do not become involved with evil deeds (11-13)

Do Not Become Involved With Evil Doers (7-10)

- Command (7)
- Reason (8a)-believers are changed people
- Command (8b-10)-Walk as children of light



Do Not Become Involved With Evil Deeds (11-13)



- Command (11)
- Reason (12)-shame of evil workers
- Explanation (13)-Light exposes darkness
- Concluding exhortation (14)

Walk of Wisdom (15-17)

- Walk circumspectly (15)
- Use time wisely (16)
- Understand God's will (17)

