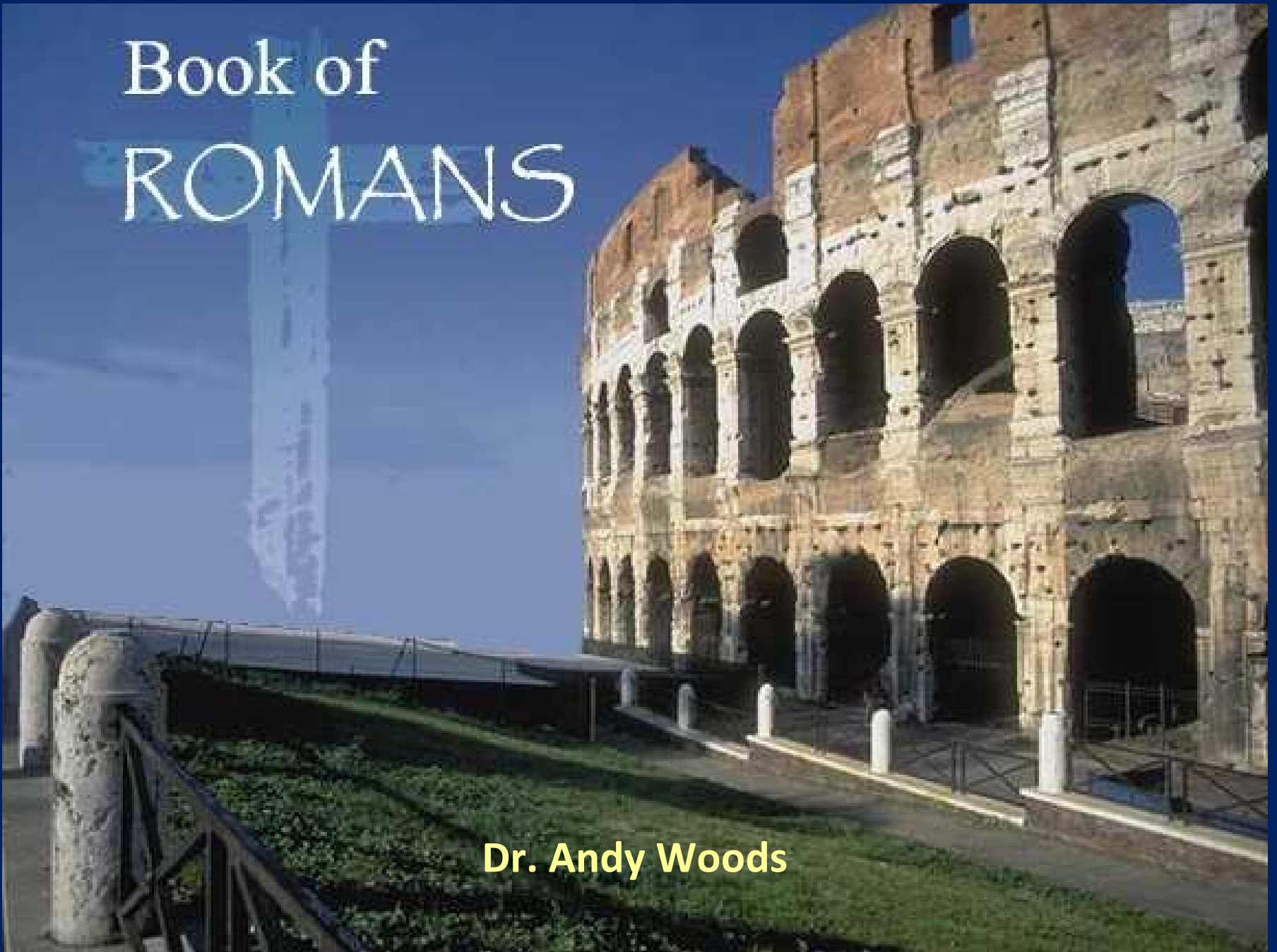
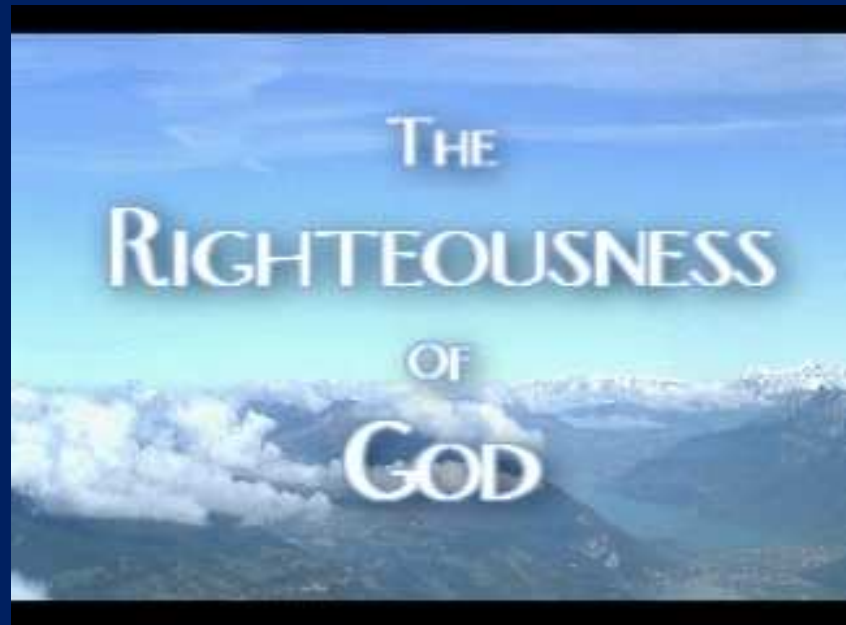


Book of ROMANS

Dr. Andy Woods



Divine Righteousness *Revealed!*



Review

Answering Eight Questions

- 1) Who wrote it? – Paul
- 2) Who was it written to? – Roman Believers
- 3) Where was it written from? – Corinth
- 4) When was it written? – A.D. 57
- 5) Why was it written? – Doctrinal Foundation
- 6) What is inside? – 7 Part Outline
- 7) What is it about? – Righteousness
- 8) What makes the book different? – Theological formality



Structure

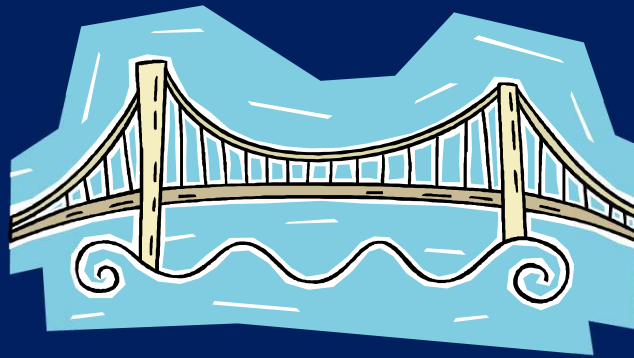
- I. Salutation (1:1-17)
- II. Sin (1:18–3:20)
- III. Salvation (3:21–5:21)
- IV. Sanctification (6–8)
- V. Sovereignty (9–11)
- VI. Service (12:1–15:13)
- VII. Summation (15:14–16:27)



Ephesians 4:1

Therefore...

1-3



4-6

What Is Inside?

1–3

4–6

Relationship

Responsibility

Doctrine

Deed

Orthodoxy

Orthopraxy

Knowledge

Wisdom

Belief

Behavior

Position

Practice

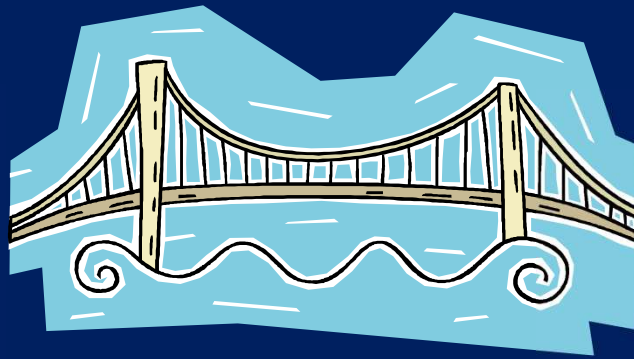
Privileges

Responsibility

Romans 12:1

Therefore...

1-11



12-16

Romans 12:1–15:13

I. **Service within the Church (12:1-13)**

II. **Service within Society (12:14–13:14)**

III. **Service toward the Weaker Brother
(14:1–15:13)**



II. Service Within Society (Rom 12:14–13:14)

A. Duty to Love (12:14-21)

B. Duty to the State (13:1-7)

C. Duty to Neighbors (13:8-10)

D. Godly Conduct (13:11-14)



II. Service Within Society (Rom 12:14–13:14)

A. Duty to Love (12:14-21)

B. Duty to the State (13:1-7)

C. Duty to Neighbors (13:8-10)

D. Godly Conduct (13:11-14)



Duty to the State - (Rom 13:1-7)

1. Command to submit to the state (1a)
2. Reasons to submit to the state (1b-4)
 - a. Divine origin of government (1b-2)
 - b. Divine purpose of government (3-4)
3. What we owe the state (5-7)
 - a. Submission (5)
 - b. Support (6-7)



Four Politically Incorrect Questions (Rom 13:1-7)

A. What is the proper and improper role of government?

B. Is capital punishment biblical?



C. What does the believer owe to the government?

D. When is it permissible to disobey the government?

Duty to the State - (Rom 13:1-7)

1. Command to submit to the state (1a)
2. Reasons to submit to the state (1b-4)
 - a. Divine origin of government (1b-2)
 - b. Divine purpose of government (3-4)
3. What we owe the state (5-7)
 - a. Submission (5)
 - b. Support (6-7)



Four Politically Incorrect Questions (Rom 13:1-7)

A. What is the proper and improper role of government?

B. Is capital punishment biblical?



C. What does the believer owe to the government?

D. When is it permissible to disobey the government?

Four Politically Incorrect Questions (Rom 13:1-7)

A. What is the proper and improper role of government?

B. Is capital punishment biblical?



C. What does the believer owe to the government?

D. When is it permissible to disobey the government?

Objections to Capital Punishment

- Sixth commandment?
- Sermon on the Mount?
- We are no longer under the Mosaic Law?
- Deterrence? (Deut 13:11-12; 19:20; Eccl 8:11)
- Executed innocent?
- Racist?
- Unconstitutional?
- Believer?



	Noahic Covenant	Mosaic Covenant
Scripture	Gen 8–9	Exod 19–40
Following	Flood	Exodus
Place	Mts. of Arat	Mt. Sinai
Date	2348 B.C.	1446 B.C.
Who	Human race	Israel
Purpose	Restrain evil	Redemptive
Modern effect	Yes	No

Objections to Capital Punishment

- Sixth commandment?
- Sermon on the Mount?
- We are no longer under the Mosaic Law?
- Deterrence? (Deut 13:11-12; 19:20; Eccl 8:11)
- Executed innocent?
- Racist?
- Unconstitutional?
- Believer?



Fifth Amendment



“No person shall...be deprived of *life*, liberty, or property, without due process of law...No person shall be held to answer for a *capital* or otherwise infamous crime unless on a presentment or indictment of a grand jury” (italics added).

Four Politically Incorrect Questions (Rom 13:1-7)

A. What is the proper and improper role of government?

B. Is capital punishment biblical?



C. What does the believer owe to the government?

D. When is it permissible to disobey the government?

Duty to the State - (Rom 13:1-7)

1. Command to submit to the state (1a)
2. Reasons to submit to the state (1b-4)
3. What we owe the state (5-7)
 - a. Submission (5)
 - b. Support (6-7)
 1. Statement of support (6a)
 2. Reasons for support (6b)
 3. Kinds of support (7)



What Does the Believer Owe to the State? (Rom 13:6-7)

1. Prayer (1 Tim 2:1-4)
2. Taxation (7a)
3. Customs (7b)
4. Reverence (7c)
5. Honor (7d)



Four Politically Incorrect Questions (Rom 13:1-7)

A. What is the proper and improper role of government?

B. Is capital punishment biblical?



C. What does the believer owe to the government?

D. When is it permissible to disobey the government?

Synthetic Outline

Chiasm “Aramaic” (2-7)

1. Gentile History (2)

2. Protection (3)

3. Revelation to a gentile king (4)

3. Revelation to a gentile king (5)

2. Protection (6)

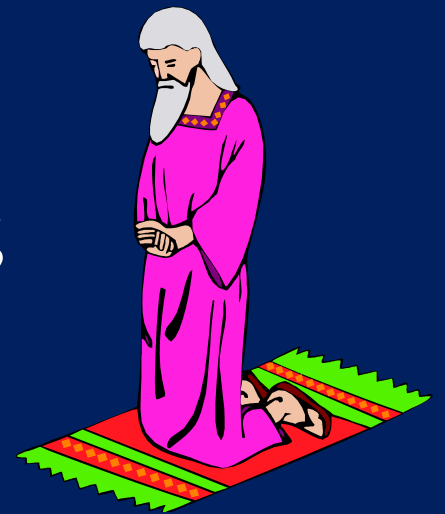
1. Gentile history (7)



DANIEL

■ Civil disobedience

- ◆ Genesis 6:11; 9:6;
- ◆ Rom. 13:1-7; 1 Tim. 2:1-4;
1 Pet. 2:13-15
- ◆ Acts 5:29; Daniel 3; 6



Principles of Civil Disobedience

A. Clear conflict

B. Exhaustion of all legal remedies

C. Maintenance of respect for civil authority
(Dan 3:17-18)

D. Willingness to pay the penalty (Dan 3;16-18)



Conclusion

Four Politically Incorrect Questions (Rom 13:1-7)

A. What is the proper and improper role of government?

B. Is capital punishment biblical?



C. What does the believer owe to the government?

D. When is it permissible to disobey the government?