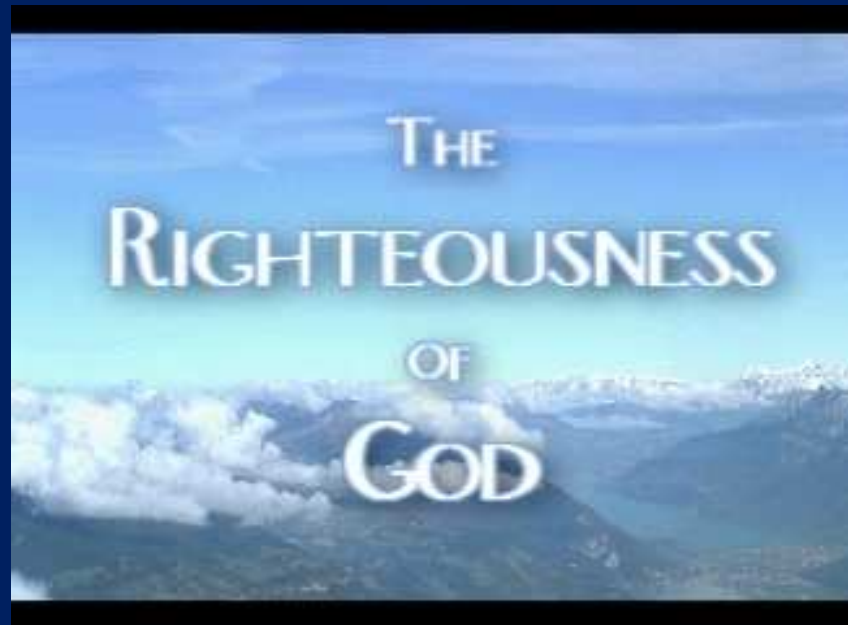


Book of ROMANS

Dr. Andy Woods



Divine Righteousness *Revealed!*



Review

Answering Eight Questions

- 1) Who wrote it? – Paul
- 2) Who was it written to? – Roman Believers
- 3) Where was it written from? – Corinth
- 4) When was it written? – A.D. 57
- 5) Why was it written? – Doctrinal Foundation
- 6) What is inside? – 7 Part Outline
- 7) What is it about? – Righteousness
- 8) What makes the book different? – Theological formality



Structure

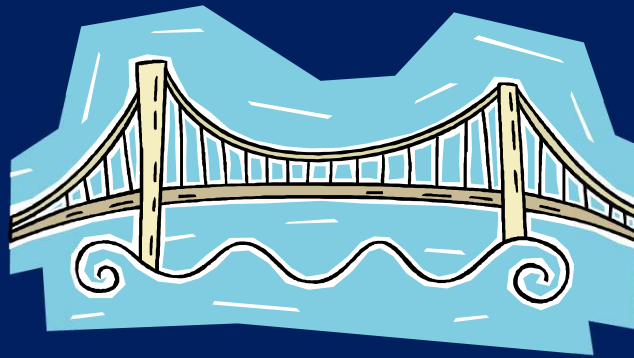
- I. Salutation (1:1-17)
- II. Sin (1:18–3:20)
- III. Salvation (3:21–5:21)
- IV. Sanctification (6–8)
- V. Sovereignty (9–11)
- VI. Service (12:1–15:13)
- VII. Summation (15:14–16:27)



Ephesians 4:1

Therefore...

1-3



4-6

What Is Inside?

1–3

4–6

Relationship

Responsibility

Doctrine

Deed

Orthodoxy

Orthopraxy

Knowledge

Wisdom

Belief

Behavior

Position

Practice

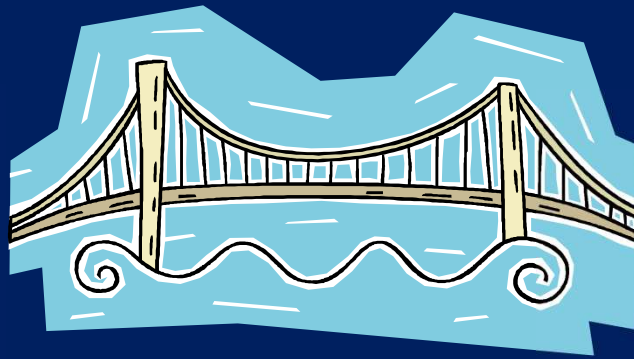
Privileges

Responsibility

Romans 12:1

Therefore...

1-11



12-16

Romans 12:1–15:13

I. **Service within the Church (12:1-13)**

II. **Service within Society (12:14–13:14)**

III. **Service toward the Weaker Brother
(14:1–15:13)**



II. Service Within Society (Rom 12:14–13:14)

A. Duty to Love (12:14-21)

B. Duty to the State (13:1-7)

C. Duty to Neighbors (13:8-10)

D. Godly Conduct (13:11-14)



Loving the Unlovable - (Rom 12:14-21)

1. Bless persecutors (14)
2. Empathize with all (15)
3. Associate with the lowly (16)
4. Promote grace and peace (17-18)
5. Conquer evil with good and not revenge (19-21)



II. Service Within Society (Rom 12:14–13:14)

A. Duty to Love (12:14-21)

B. Duty to the State (13:1-7)

C. Duty to Neighbors (13:8-10)

D. Godly Conduct (13:11-14)



Duty to the State - (Rom 13:1-7)

1. Command to submit to the state (1a)
2. Reasons to submit to the state (1b-4)
 - a. Divine origin of government (1b-2)
 - b. Divine purpose of government (3-4)
3. What we owe the state (5-7)
 - a. Submission (5)
 - b. Support (6-7)



Duty to the State - (Rom 13:1-2)

1. Command to submit to the state (1a)
2. Reasons to submit to the state (1b-4)
 - a. Divine origin of government (1b-2)
 1. Principle stated (1b)
 2. Two inferences (2)
 - a. Those who resist government resist God (2a)
 - b. Resisters will be judged (2b)



Duty to the State - (Rom 13:1-4)

1. Command to submit to the state (1a)
2. Reasons to submit to the state (1b-4)
 - a. Divine origin of government (1b-2)
 - b. Divine purpose of government (3-4)
 1. Proposition stated (3a)
 2. Praise to those who do good (3b-4a)
 3. Punishment to those who do evil (4b)



Duty to the State - (Rom 13:1-7)

1. Command to submit to the state (1a)
2. Reasons to submit to the state (1b-4)
3. What we owe the state (5-7)
 - a. Submission (5)
 1. Proposition stated (5a)
 2. Two reasons (5b)
 - a. Negative: Fear of punishment
 - b. Positive: Conscience



Duty to the State - (Rom 13:1-7)

1. Command to submit to the state (1a)
2. Reasons to submit to the state (1b-4)
3. What we owe the state (5-7)
 - a. Submission (5)
 - b. Support (6-7)
 1. Statement of support (6a)
 2. Reasons for support (6b)
 3. Kinds of support (7)



Synthetic Outline

Chiasm “Aramaic” (2-7)

1. Gentile History (2)

2. Protection (3)

3. Revelation to a gentile king (4)

3. Revelation to a gentile king (5)

2. Protection (6)

1. Gentile history (7)



Conclusion

Duty to the State - (Rom 13:1-7)

1. Command to submit to the state (1a)
2. Reasons to submit to the state (1b-4)
 - a. Divine origin of government (1b-2)
 - b. Divine purpose of government (3-4)
3. What we owe the state (5-7)
 - a. Submission (5)
 - b. Support (6-7)

